

Key Benefits

Self-service insights for better and faster decisions to effect change.

Engage management teams with tools to increase efficiency, quality and lower costs.

Equip cardiologists and staff to be informed proactively and avoid wasteful activity.

Win at payment reform, hold-backs and penalties by ensuring your regulatory data submissions are correct and timely.

Supercharge existing IT data investments.

A Targeted Solution for the Cardiology Department's Problems

Leading a health system or one of their busy departments has always been challenging, but rarely has it been more complex than today. Uncertainty with the fate of the ACA, Medicare and Medicaid retroactive reimbursement formula changes, increased competition through mergers and affiliations, and new value based payment models and other stressors are keeping many healthcare executives up at night. One pacifier has been to throw money at it – hundreds of millions, even billions of dollars on deployments of an EMR, data warehouse, enterprise analytics and other systems.

The cardiology department is the highest margin department within a system, yet if you ask cardiologists and management if they can quickly get the data insights they need to thrive, invariably they answer “No”. Reports and pretty pictures don’t cut it anymore; existing systems are failing them, and they still need a targeted solution that directly improves quality of care and operational efficiency. Introducing Foundations™ Cardiology – top leverage your existing data investments.

Foundations™ enables in-depth data analysis crucial for running a smart business today while also enabling new payment models, quality reporting guidelines, and the demands of value-based payments. Achieving these goals requires targeted, real-time, self-service analytics that provides immediate insights for timely decision-making at the physician, department and executive levels.

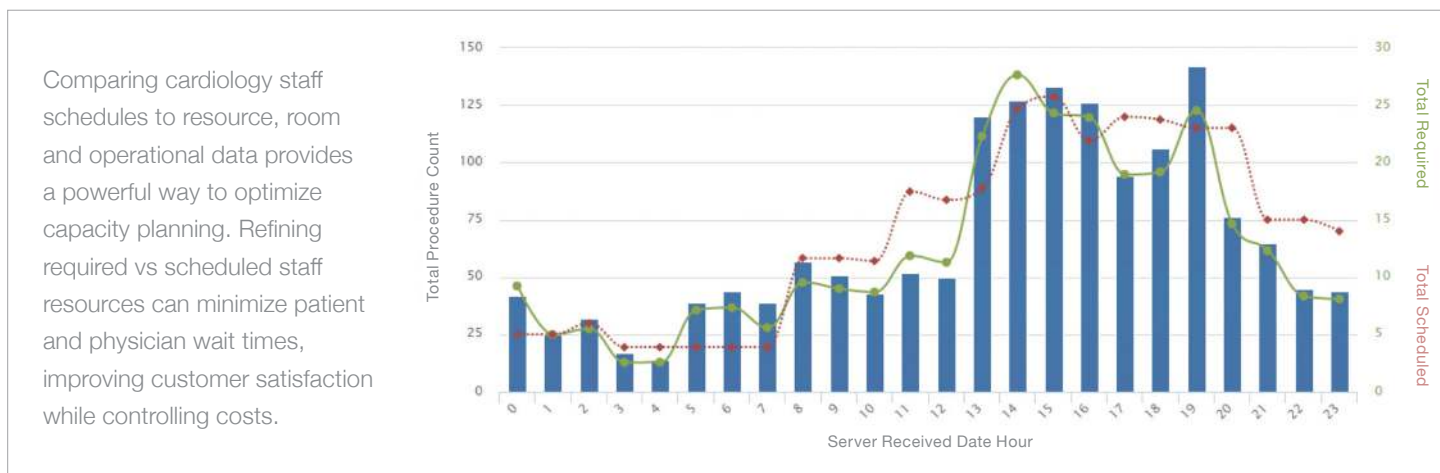
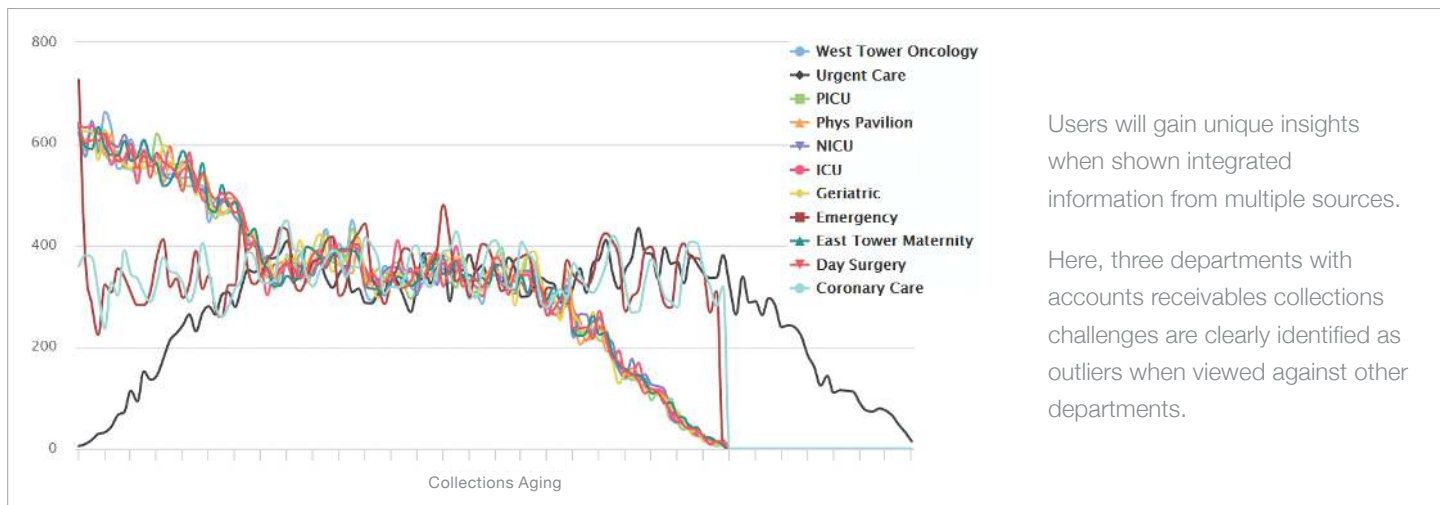
Last Quarter Summary info			
Total Procedure Count	68,869	Aim to exceed 60,000	115%
Total Professional Charge	\$12,275,254.00	-	-
Total Number Of Billable Exams	81,182.68	Aim to exceed 60,000	135%
Average Turn Around Time	4d	Stay under 2d:0h:0m	222%
AR Aging > 60 days info			
Total Technical Charge	\$74,827,331.50	Stay under \$40,000,000.00	187%
Last Months Summary info			
Total Procedure Count	22,839	Aim to exceed 30,000	76%
Total Professional Charge	\$4,070,768.00	Aim to exceed \$5,000,000.00	81%
Total Number Of Billable Exams	26,922.58	Stay close to 27,000	100%
Average Turn Around Time	4d	Stay under 2d:0h:0m	221%

Foundations™ Cardiology depicts key financial and operational trends to provide leadership with the summary views they need to steer the business.

For example, operational and revenue cycle information can be summarized with red/green traffic-light indicators of progress towards goals.

Unique Foundations™ Cardiology Capabilities

1. Integrates with a wide range of financial, operational and clinical IT systems to provide a complete picture of the cardiology department performance and efficiency.
2. Progressive disclosure and discovery engine that efficiently magnifies the ability to understand the breadth of information and remarkably increases the depth of insight.
3. Implemented in weeks, not months.
4. Self-service dashboards, canned and customized reports, plus real-time data mining all help cardiology physicians, administrators, staff and executives to do better at their jobs.



Why Foundations™ Cardiology is Different

Foundations™ Cardiology is a configurable, real-time management solution that utilizes clinical, financial and operational data in real-time, combined with historical data. We enable authorized users to discover important correlations and trends, with the ability to drill down into the information. This data is then enriched and delivered to users in a personalized manner via role-based access.

Designed to be used by cardiologists, hospital and department leaders, and staff, Foundations™ makes it easy to understand, plan and track short, medium and long-term objectives as well as identify the clinical outliers that improve quality, reimbursement and patient satisfaction.